



## BRANDON RECTANGULAR FIRE PIT



TECHO-BLOC WARRANTY APPLIES TO BRANDON STONES  
THE WARRANTY **DOES NOT APPLY** TO ACCESSORY KIT

### NOTES

**Sold as a kit not pre-assembled.**  
**Raffinato pre-cut caps included.**

**Techo-Bloc is not responsible for any damages to the firepit if it is not installed with a sleeve or accessory kit. The firepit is not designed for large fires. Fire should be contained at least 6" away from the firepit wall blocks. Overheating could lead to heat damage to the firepit components.**

\*For an authentic look, each color option is composed of a variety of darker & lighter tones. Natural ingredients such as granite are present within the recipe to allow for a range in tones, veining and textures from one stone to another.

See 104 for more technical information.

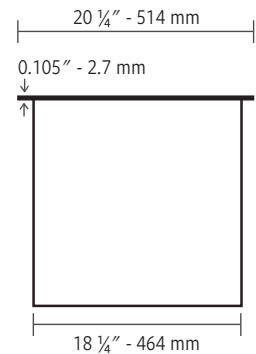
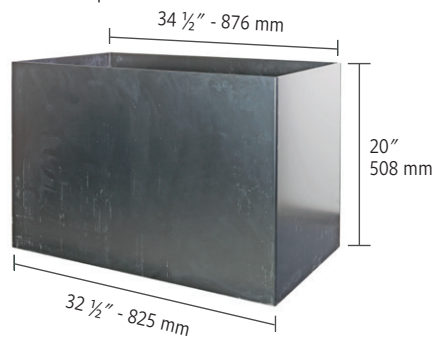
### Specifications per pallet

	Imperial	Metric
Cubing	<b>58 units</b>	58 units
Approx. Weight	2 660 lbs	1 207 kg
Overall Height	19 <sup>15</sup> / <sub>16</sub> in	507 mm
Overall Width	44 <sup>1</sup> / <sub>2</sub> in	1 130 mm
Overall Length	57 <sup>3</sup> / <sub>4</sub> in	1 467 mm
Brandon 90 mm units	20 <b>C</b> units	
Brandon 90 mm corner units	30 units	
Cap units	8 units	

### Options and accessories (sold separately)

#### Sleeve Insert

#### Wood Firepit



FIRE PIT

CAP

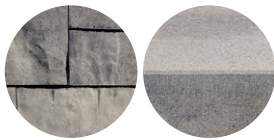
Chestnut Brown



FIRE PIT

CAP

Shale Grey



### HPC Burners (sold separately)

#### HPC Burners

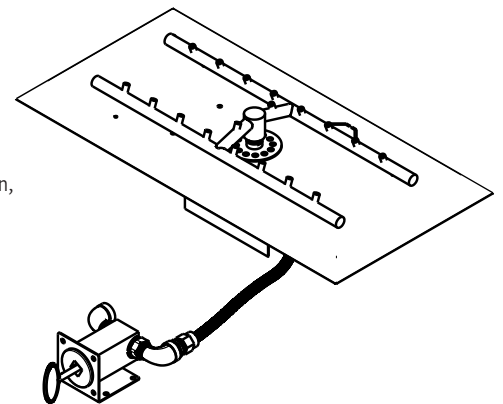
##### Features:

Natural Gas or Liquid Propane  
Standard BTU: 65K  
Push button ignition

##### Includes:

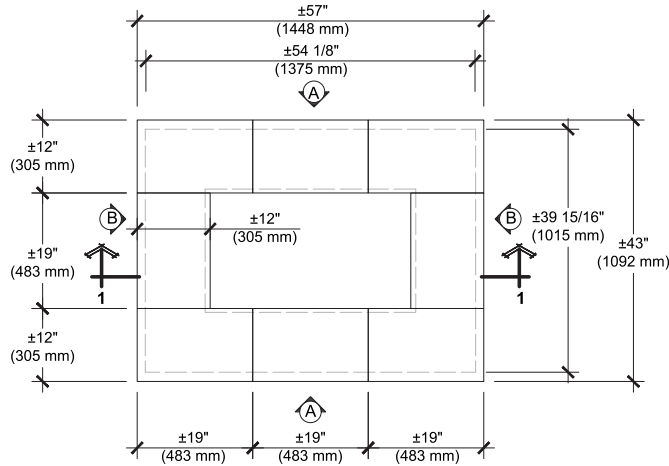
Stainless steel burner with aluminum pan, mounting brackets, Dante valve with push-button ignition, vents, lava rock and stainless steel cover.

See page 117 for details.

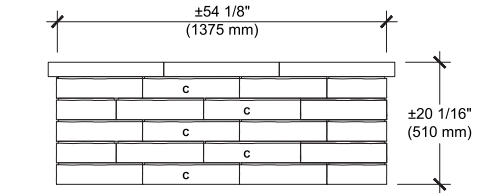


# INSTALLATION GUIDE

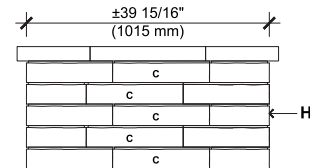
## BRANDON RECTANGLE, FIRE PIT (KIT)



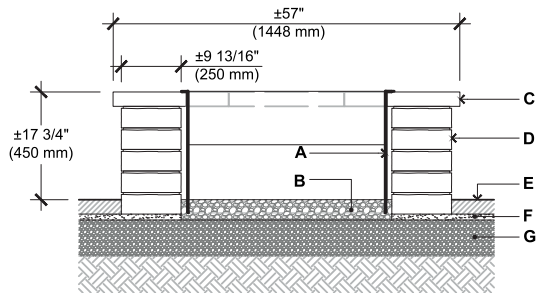
TOP



ELEVATION A




ELEVATION B



SECTION 1-1

- A.** STEEL BOX INSERT
- B.** CLEAN STONE 3/4" (20 mm), 4" (100 mm) THICK
- C.** RAFFINATO CAP 60 mm (PRE-CUT)
- D.** BRANDON 90 mm BLOCK
- E.** TECO-BLOC PAVERS OR SLABS
- F.** SETTING BED 1" (25 mm)
- G.** COMPACTED GRANULAR BASE 0-3/4" (0-20 mm)
- H.** BRANDON 90 mm CORNER BLOCK

### QUANTITY OF MATERIALS REQUIRED

- RAFFINATO CAP 60 mm: 8
- Brandon 90 mm block  : 20
- Brandon 90 mm corner block: 30

**NOTE:** Secure the blocks using a heat resistant concrete adhesive. The installer must ensure that the installation and use of the fire pit comply with local regulations and code requirements.

Consult our Installation Guide in our website for a detail step by step installation.



## BRANDON SQUARE FIRE PIT



TECHO-BLOC WARRANTY APPLIES TO BRANDON STONES  
THE WARRANTY **DOES NOT APPLY** TO ACCESSORY KIT

### NOTES

**Sold as a kit not pre-assembled.**  
**Raffinato pre-cut caps included.**

**Techo-Bloc is not responsible for any damages to the firepit if it is not installed with a sleeve or accessory kit. The firepit is not designed for large fires. Fire should be contained at least 6" away from the firepit wall blocks. Overheating could lead to heat damage to the firepit components.**

\*For an authentic look, each color option is composed of a variety of darker & lighter tones. Natural ingredients such as granite are present within the recipe to allow for a range in tones, veining and textures from one stone to another.

See 106 for more technical information.

**Sleeve insert, Burners and Accessories are sold separately.**



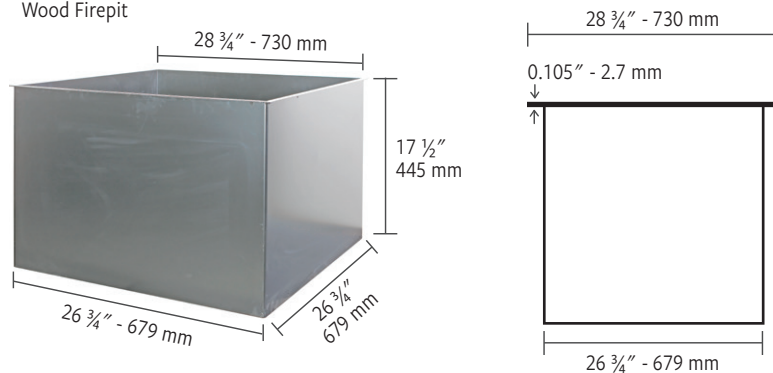
### Specifications per pallet

	Imperial	Metric
Cubing	<b>66 units</b>	66 units
Approx. Weight	2 454 lbs	1 113 kg
Overall Height	19 <sup>15</sup> / <sub>16</sub> in	507 mm
Overall Width	53 <sup>1</sup> / <sub>2</sub> in	1 359 mm
Overall Length	53 <sup>1</sup> / <sub>2</sub> in	1 359 mm
Brandon 90 mm units	20 <b>A</b> units	20 <b>B</b> units
Brandon 90 mm corner units	20 units	
Cap units	6 units	

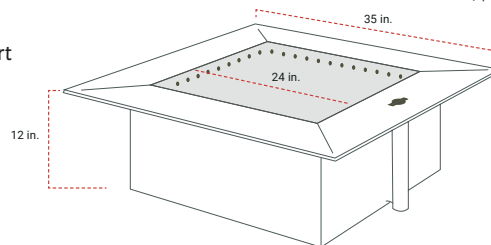
### Options and accessories (sold separately)

#### Sleeve Insert

##### Wood Firepit



##### Smokeless Insert



### HPC Burners and Breeo Accessories

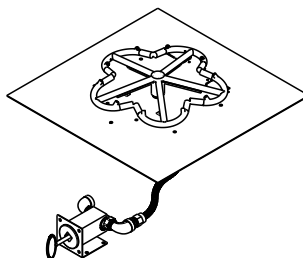
#### HPC Burners

##### Features:

Natural Gas or Liquid Propane  
Standard BTU: 65K  
Push button ignition

##### Includes:

Stainless steel burner with aluminum pan, mounting brackets, Dante valve with push-button ignition, vents, lava rock and stainless steel cover.  
See page 117 for details.



#### Grilling System Outpost™

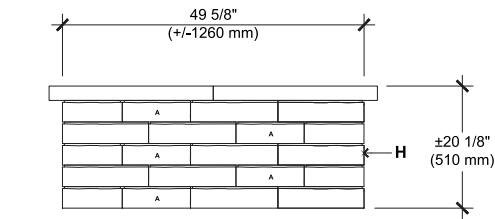
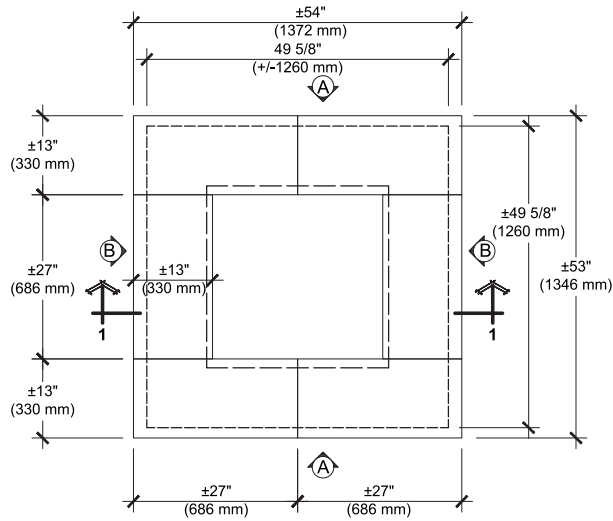
Only for Smokeless inserts

Transforms fire pit into wood-fired grill.  
Weight: 12 lbs. 9 oz.  
Diameter: 22 inches  
See page 118 for details.



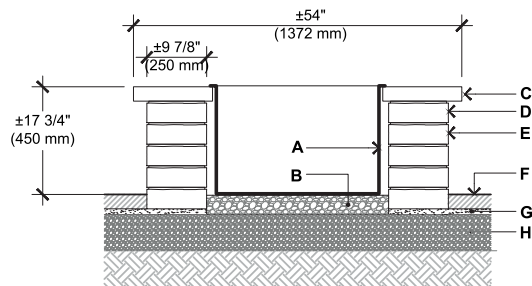
# INSTALLATION GUIDE

## BRANDON SQUARE, FIRE PIT (KIT)



ELEVATION A

TOP



SECTION 1-1

- A. STEEL BOX INSERT
- B. CLEAN STONE  $\frac{3}{4}$ " (20 mm), 4" (100 mm) THICK
- C. RAFFINATO CAP 60 mm (PRE-CUT)
- D. BRANDON 90 mm BLOCK
- E. TECO-BLOC PAVERS OR SLABS
- F. SETTING BED 1" (25 mm)
- G. COMPACTED GRANULAR BASE 0- $\frac{3}{4}$ " (0-20 mm)
- H. BRANDON 90 mm CORNER BLOCK

### QUANTITY OF MATERIALS REQUIRED

- RAFFINATO CAP 60 mm: 6
- Brandon 90 mm block: 20 A, 20 B
- Brandon 90 mm corner block: 20

**NOTE:** Secure the blocks using a heat resistant concrete adhesive. The installer must ensure that the installation and use of the fire pit comply with local regulations and code requirements.

Consult our Installation Guide in our website for a detail step by step installation.

PLEASE REFER TO P.4 FOR THE CORRECT USE AND LIMITATIONS OF PROVIDED TECHNICAL INFORMATION.

# INSTALLATION GUIDE

## HPC BURNERS FOR FIRE PITS

### DESCRIPTION

Made for outdoor gas fire pits (natural or propane), the patented design of the Torpedo™ burner by HPC delivers the biggest CSA-certified flame on the market. Made of welded commercial-grade stainless steel, this burner seamlessly blends into any fire pit design.

### WHAT COMES IN THE HPC BURNER BOX?

**Valencia units:** burner and connection valve, accessories, owners manual, spark igniter kit, vent covers, key valve bracket, 5 install collars and a cover, 65k orifice installed, 150k orifice loose.

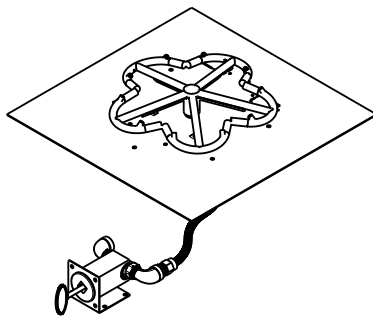
**Prescott units:** burner and connection valve, accessories, owners manual, spark igniter kit, vent covers, key valve bracket, 4 install collars and a cover, 65k orifice installed, 150k orifice loose.

**Brandon units:** burner and connection valve, accessories, owners manual, spark igniter kit, vent covers, key valve bracket, 4 install collars and a cover, 65k orifice installed, 150k orifice loose.

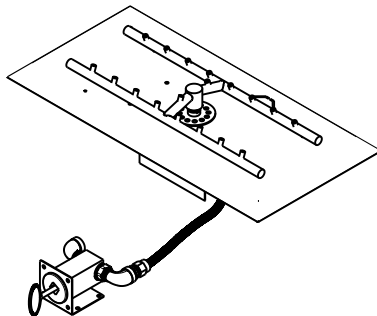
**Raffinato units:** burner and connection valve, accessories, owners manual, spark igniter kit, vent covers, key valve bracket, 4 install collars and a cover, 65k orifice installed, 150k orifice loose.

The burner and connection valve come as one part connected. Install collars go around the perimeter of the fire pit.

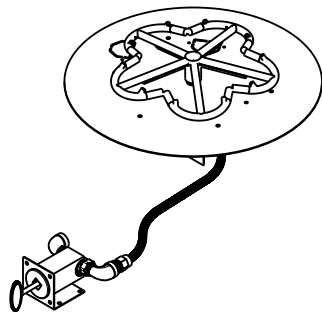
**Lumi Bowl:** burner and connection valve, accessories, owners manual, key valve bracket, a vinyl cover, 65k orifice installed, 150k orifice loose.



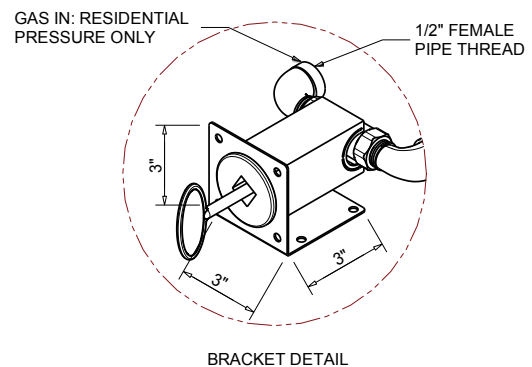
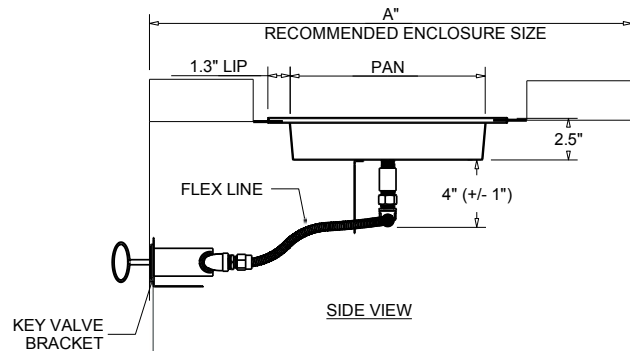
HPC SQUARE - Compatible with Brandon Square and Prescott



HPC RECTANGLE - Compatible with Brandon Rectangle and Raffinato



HPC ROUND - Compatible with Lumi and Valencia



# INSTALLATION GUIDE

## BREEO SMOKELESS INSERTS

### DESCRIPTION

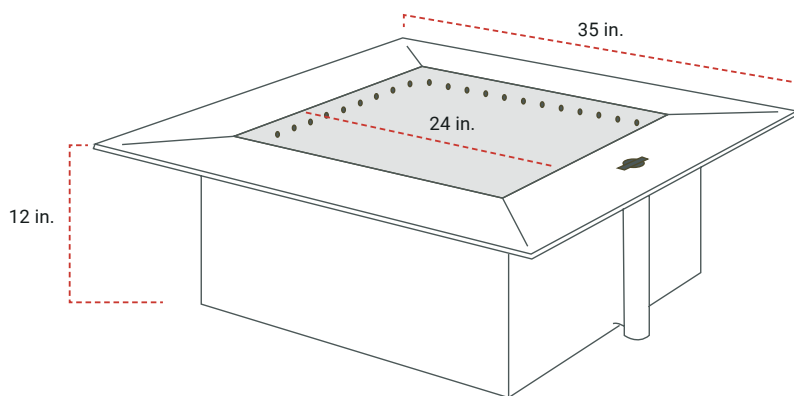
If you enjoy spending nights by a woodburning fire but aren't a fan of the smoke, the Zentro smokeless insert by Breeo was made for you. Designed to provide more oxygen, this insert allows for a hotter fire that burns its own smoke before it has a chance to escape the fire pit. Say goodbye to teary eyes and coughs, and hello to a great night with friends and family.

### PRODUCT DETAILS:

#### Size: 24"

Circular version compatible with:  
Valencia Circle Fire Pit

Square version compatible with:  
Brandon Square Fire Pit  
Prescott Square Fire Pit



BREEO SQUARE

### MATERIAL:

**Zentro:** Black Painted Steel

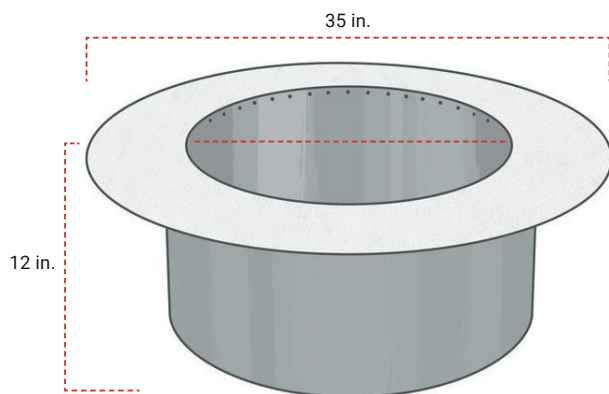
**Weight:** 113 lbs.

### DIMENSIONS:

**Inside Diameter of Bowl:** 24 in.

**Outside Diameter of Rim:** 35 in.

**Total Height:** 12 in.



BREEO ROUND 24"

### MATERIAL:

**Zentro:** Black Painted Steel

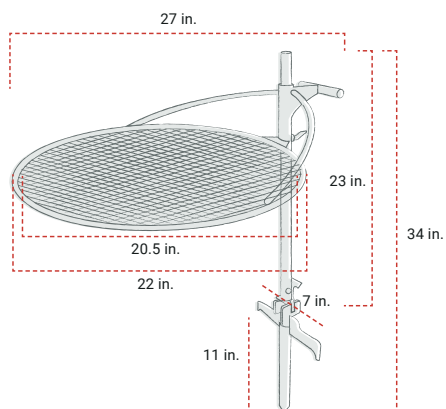
**Weight:** 104 lbs.

### DIMENSIONS:

**Inside Diameter of Bowl:** 24 in.

**Outside Diameter of Rim:** 35 in.

**Total Height:** 12 in.



BREEO OUTPOST

### MATERIAL:

#### Outpost™ Grill:

Stainless Steel  
Solid Stainless Post

#### Anchorpoint™ System:

Stainless Steel

### DIMENSIONS:

#### Outpost™ Grill:

Grill Total Width: 22 in.

Grill Space Width: 20.5 in.

Post Height: 23"

(Exposed above Anchorpoint)

Post Total Height: 28.5 in.

(Inserts into Anchorpoint)

Max Height of Grill: 19 in.

(Top of Anchorpoint to Bottom of Grill)

#### Anchorpoint™ System:

Anchorpoint Width: 7 in.

Anchorpoint Height: 11 in.

#### Overall

Total Width: 27 in.

Total Height: 34 in.

Total Weight: 12 lbs. 9 oz.

#### Max Weight with Outpost™ Grill and Kettle Hook X24

X Series 19: 20 lbs.

X Series 24: 40 lbs.

X Series 30: 70 lbs.

(Weight limits with weight oriented 180 degrees opposite the pit)